

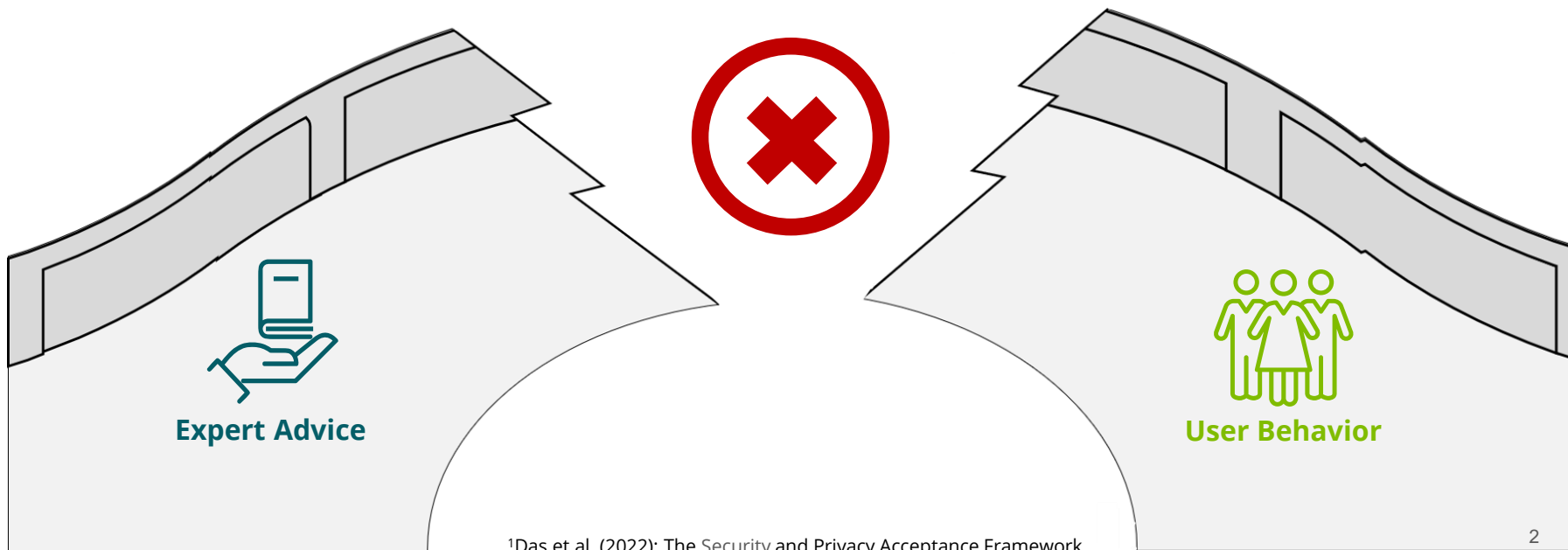
# More than Usability: Differential Access to Digital Security & Privacy

Annalina Buckmann, Jan Magnus Nold, Yasemin Acar, Yixin Zou

USENIX Symposium on Usable Privacy and Security (SOUPS) 2025.  
August 10-12, 2025

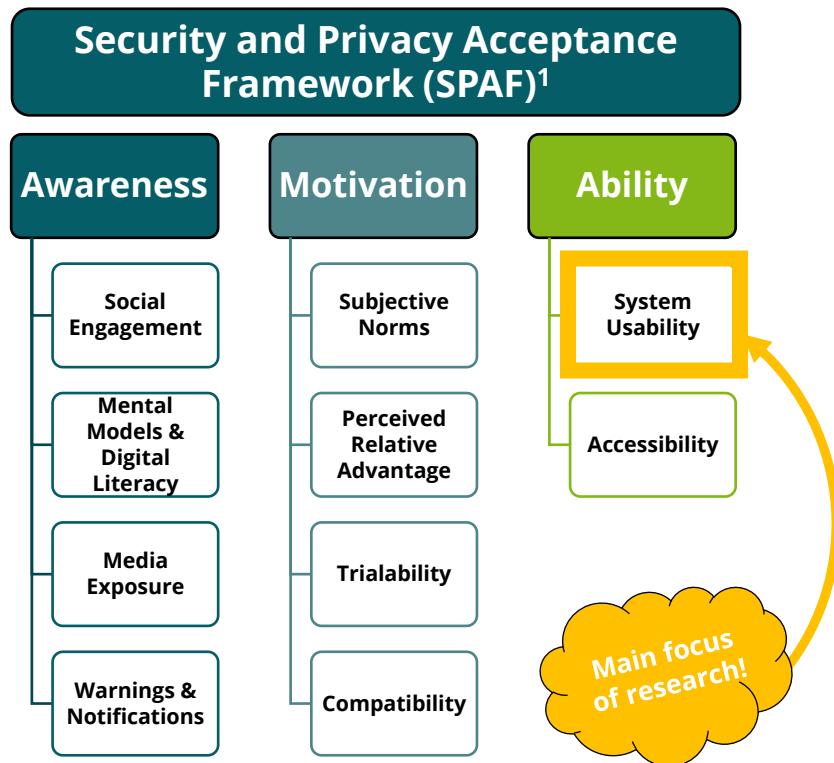
# MOTIVATION

**“If enough people employed basic, expert-recommended best practices [...] the cybercrime industry would be hamstrung.”<sup>1</sup>**



<sup>1</sup>Das et al. (2022): The Security and Privacy Acceptance Framework.

# BACKGROUND



## Inclusive and Accessible S&P

- ❖ From „average, general user“ to **diverse user groups**
- ❖ Usually: one specific group/factor
  - „**contradictory results and vast unknowns**“ how socio-demographic factors shape S&P behaviors
  - Recent work suggest to investigate **intersectionality** and **universal barriers**

<sup>1</sup>Das et al. (2022): The Security and Privacy Acceptance Framework.

# RESEARCH QUESTIONS & CONTRIBUTIONS

## In-depth interviews to see...



- ❖ How can SPAF explain S&P behaviors of a **diverse sample**?
- ❖ What **barriers** occur when engaging S&P?

## We contribute...



1. **New underlying factors** for awareness, motivation, and ability
2. Insights into **barriers to S&P**
3. The concept of ***differential access*** to S&P

# IN-DEPTH INTERVIEWS WITH DIVERSE SAMPLE

## Diverse Sample

- N = 47, diverse in gender, age, income, education, health & ability, expertise

## Probing for

- S&P in everyday life
- S&P perceptions, behaviors, challenges, advice/support, ...

## Bottom-up Analysis

- Centering participants' perceptions and experiences, barriers, wishes
- Looking for intersecting factors

## SPAF

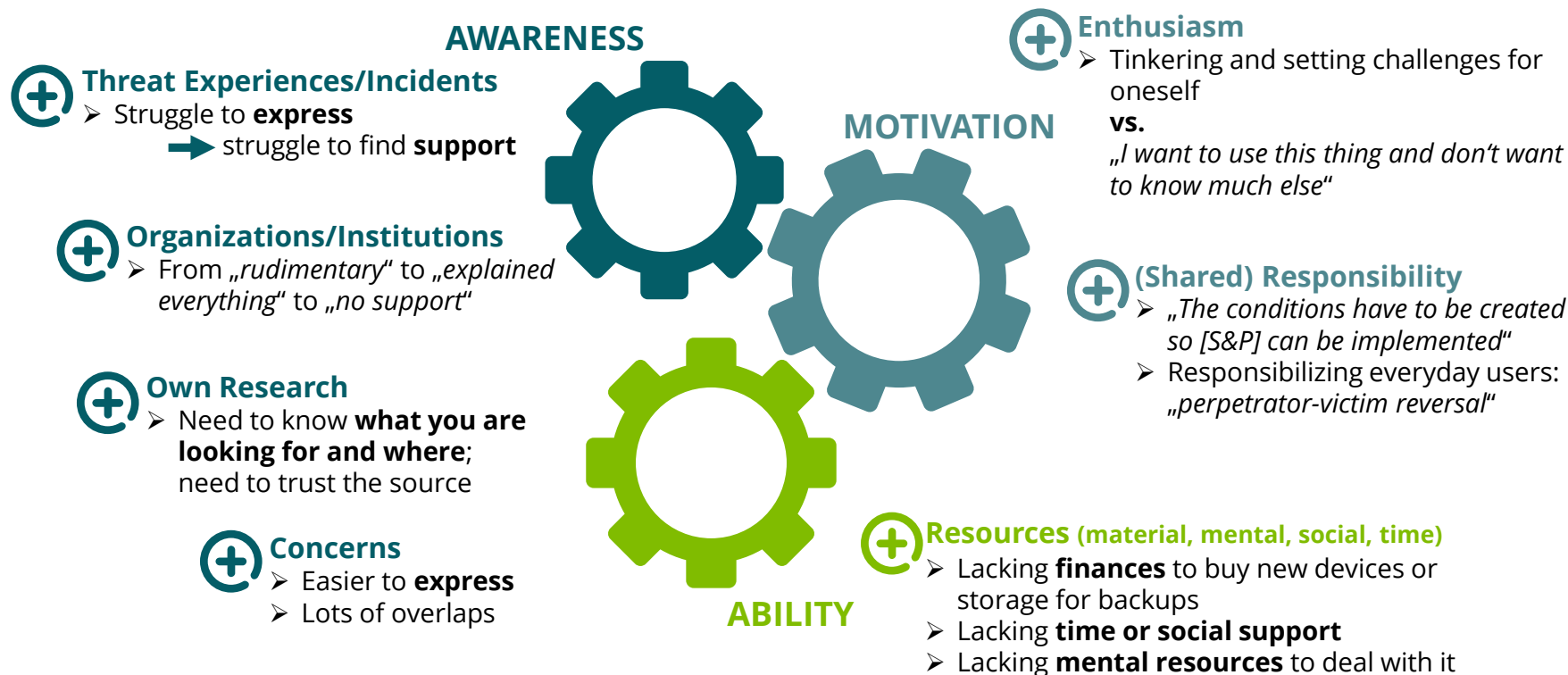
- Mapping to SPAF factors



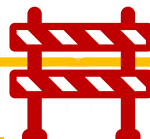
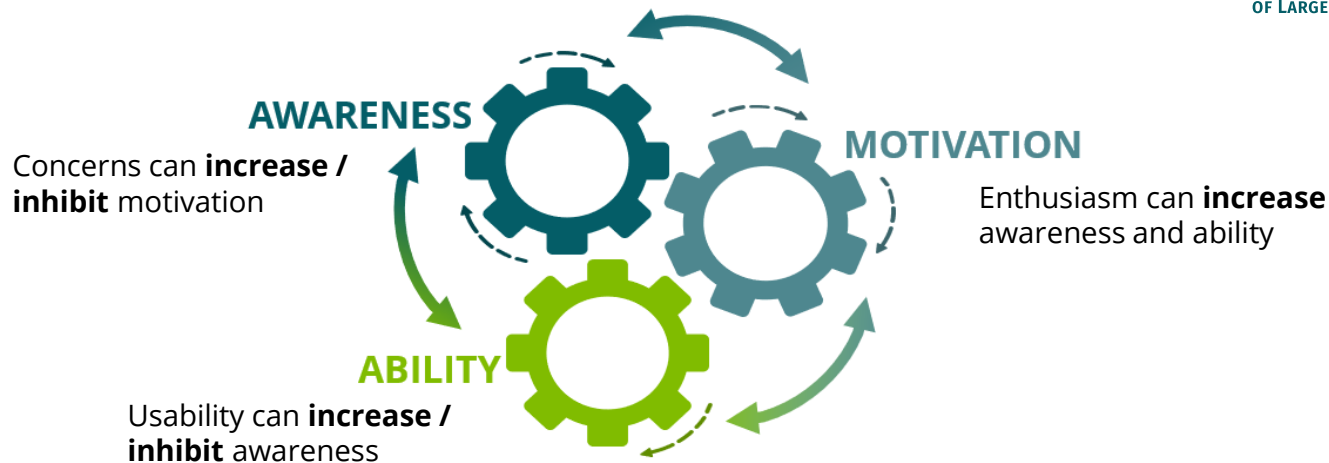
Gender		Age	
Woman	23	Young Adult	9
Man	23	Adult	22
Non-Binary	1	Older Adult	16
Education		Income	
Lower	13	Lower	23
Higher	13	Middle	11
Uni/Coll.	21	High	13
Chronic Disease / Disability		Enthusiast	
Yes	20	Yes	12

All these intersect in various ways!

# 1. NEW UNDERLYING SPAF FACTORS



## 2. INTERRELATIONSHIPS AND BARRIERS



### S&P Communication

*"35-year-old nerds write for 35-year-old nerds. But we are simply left out."*

### Fear and Limited Trust

*"I don't want to go online with shaky fingers."*

### Limited Digital Skills

*"If you don't know what you're doing, you're very lost."*

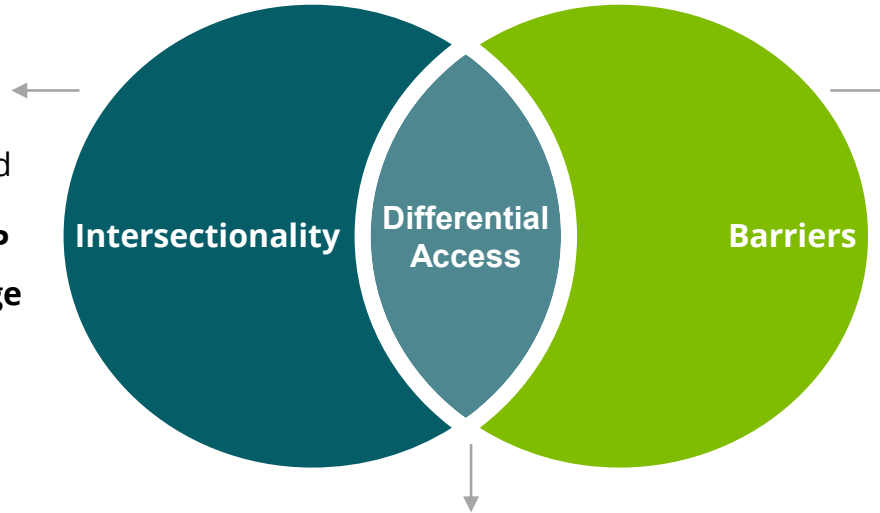
### Limited Social Support

*"There is a tremendous need and perhaps we should address it."*

### 3. DIFFERENTIAL ACCESS TO S&P

#### Intersectionality

- Intersecting socio-demographic factors and identities **amplify or alleviate burden of S&P**
- These factors can **change over course of life**



#### Barriers

Barriers in design and social environment **run across...**

- SPAF factors
- Socio-demographics

#### Differential Access

- Intersectionality & barriers result in **differential access** to S&P
- **Access to S&P** hinges on **social and relational position** within society
- Supports uncovering & explaining **underlying „whys“** of user behavior & contradictory results



# BRIDGING THE GAP: FUTURE WORK



**Expert Advice**



## **Integrative Approaches**

Address awareness, motivation, and ability concurrently.



## **Recognize Differential Access**

Develop measures that are adaptable to different contexts, acknowledging intersectionality and barriers.



## **Improve S&P Communication**

Foster creative methods to reduce fear and build trust. Focus on user concerns rather than threats.



## **Empower S&P Multipliers**

Support S&P supporters in disseminating S&P knowledge and skills.



**User Behavior**



## **Shared Responsibility**

Engage the broader ecosystem of experts, organizations, regulators, and social networks.



- We validated **SPAF** and identified **new underlying factors** for S&P awareness, motivation, and ability, along with four **critical barriers**.
- The **interrelationships** of awareness, motivation, and ability require **integrative approaches**.



- We contribute the concept of **differential access to S&P**: social position and relations, intersecting identities, and barriers **fundamentally shape access to S&P**.
- This requires **contextual engagements and interventions**.



- S&P is deeply **embedded in larger social and cultural processes**, requiring lifelong learning, social support, and adaptability to diverse contexts.
- This requires **close cooperation among a diversity of stakeholders**.

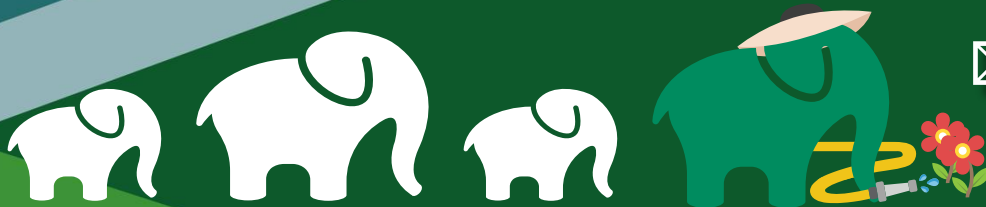
# CASA

CYBER SECURITY IN THE AGE  
OF LARGE-SCALE ADVERSARIES



Read our paper here!

## ❖ Thank you for your attention!



✉ [annalina.buckmann@rub.de](mailto:annalina.buckmann@rub.de)  
...or find me on LinkedIn or Slack!

[casa.rub.de](https://casa.rub.de)